

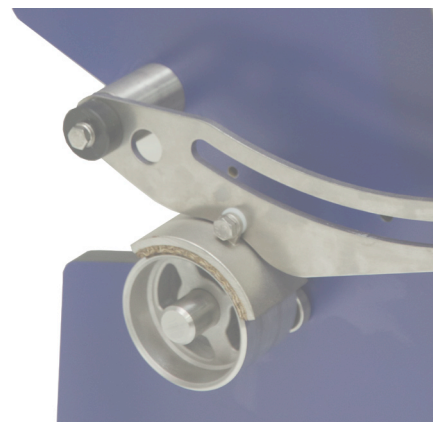
innovative fresh dutch design



stainless steel constructions



hygienic design



JASA 350

The JASA 350 machine is suitable for packing bulk goods in bags from film on the reel. The machine can produce various bag styles by use of available options. The constructions are in stainless steel and plastic parts and therefore very suitable for the food-industry. The machine is equipped with an industrial PC operating system, is free programmable and very simple to operate by means of the JASA Display. Up to 100 programs can be memorized and selected. Texts are in the English language (others on request).

THE STANDARD MACHINE FEATURES

- machine available with Siemens controles or an embedded system;
- constructions complete in stainless steel and plastic parts;
- round forming set, size to be specified;
- film splice unit;
- printer frame for thermo transfer printer (standard);
- eye mark controlled bag length;
- machine stop by end of film detection;
- industrial PC operating system;
- up to 100 programs can be memorized and selected;
- synchronisation for most weighing and dosing systems;
- synchronisation for printer.

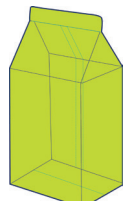
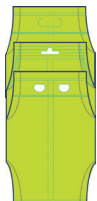
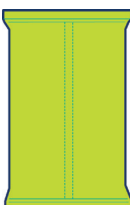
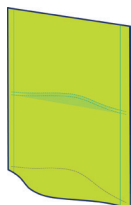
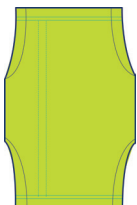
IN ACCORDANCE WITH CE-STANDARDS THE MACHINE IS EQUIPPED WITH THE FOLLOWING SAFETY SYSTEMS

- sealing jaw protection for not closing of the jaws with automatic machine stop;
- in operating system integrated protections for breakdown, wire disconnection and not heated sealing jaws;
- wide opening door covering the total sealing area.

PACKING EXAMPLES

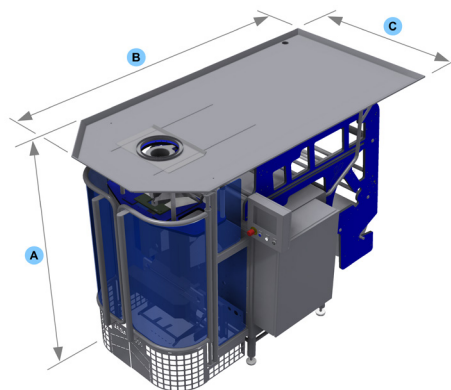


PACKING VARIETIES



JASA

PACKAGING SYSTEMS



**These drawings are rough sketches.
Final designs differ per machine.**

TECHNICAL SPECIFICATIONS JASA 350

- bag width 150-350 mm
- bag length, in one seal step up to 420 mm (longer in multiple seal steps)
- speed up to 50 pack/min.

MACHINE DIMENSIONS

- A 1810 mm
- B 1310 mm
- C 2350 mm
- outside diameter film reel 450 mm
- machine weight 480 kg

ELECTRICAL/PNEUMATICAL REQUIREMENTS

- electrical capacity 3 kW, 3x400 VAC + N + PE, 50 HZ, others on request
- pneumatical requirements 6 bar
- pneumatical capacity (max) 370 l/min

OPTIONS

- heatseal
- heatseal + punching device
- multiseal
- multiseal + punching device
- MAP-connection
- embedded controles
- chainbags
- gusseted bag unit
- block bottom bag unit
- printer systems
- labeling systems
- additional formingsets
- doyp (standing) pouch
- doyp pouch with reclosable strip

**All details are indications.
Final details differ per machine**